

PART OF N.E. 1/4 OF SECTION 29, T.7N., R.1W., S.L.B. & M.

TAXING UNIT: 10

IN NORTH OGDEN CITY
SCALE 1" = 100'

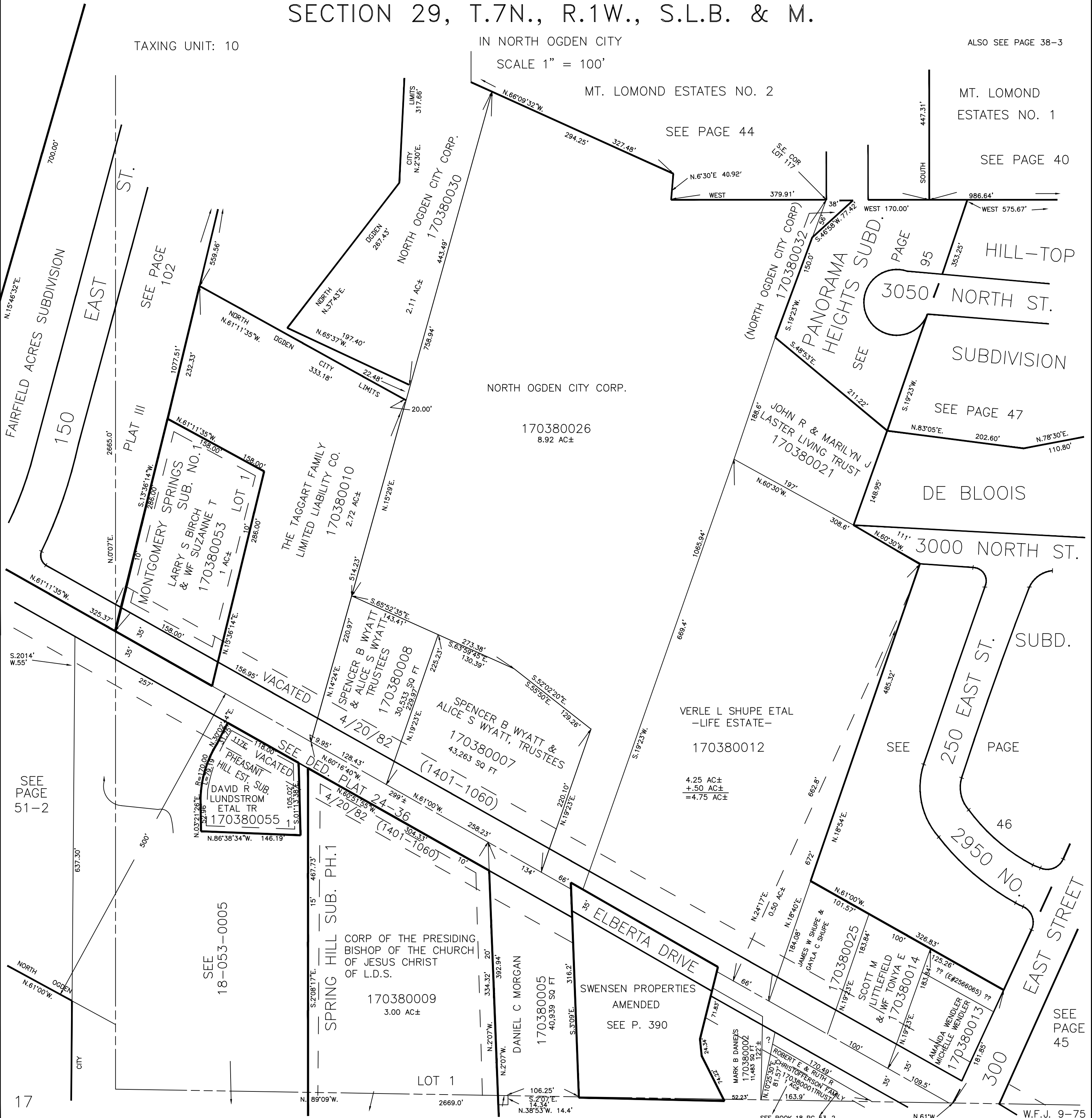
ALSO SEE PAGE 38-3

MT. LOMOND ESTATES NO. 2

MT. LOMOND ESTATES NO. 1

SEE PAGE 44

SEE PAGE 40



FAIRFIELD ACRES SUBDIVISION
150
EAST ST.

SEE PAGE 102

MONTGOMERY SPRINGS SUB. NO. 1
LARRY S BIRCH & WIFE SUZANNE T
170380053
1 AC±
LOT 1

THE TAGGART FAMILY LIMITED LIABILITY CO.
170380010
2.72 AC±

NORTH OGDEN CITY CORP.
170380030

NORTH OGDEN CITY CORP.
170380026
8.92 AC±

(NORTH OGDEN CITY CORP)
170380032

PANORAMA HEIGHTS SUBD.
SEE PAGE 95

HILL-TOP SUBDIVISION
SEE PAGE 47

JOHN R & MARILYN J LASTER LIVING TRUST
170380021

DE BLOOIS

3000 NORTH ST.

SPENCER B WYATT & ALICE S WYATT TRUSTEES
170380008
30,533 SQ FT

SPENCER B WYATT & ALICE S WYATT, TRUSTEES
170380007
43,263 SQ FT
(1401-1060)

VERLE L SHUPE ETAL - LIFE ESTATE -
170380012
4.25 AC±
+ .50 AC±
= 4.75 AC±

VACATED
PHEASANT HILL EST. SUB.
DAVID R LUNDSTROM ETAL TR
170380055

SEE PAGE 51-2

SEE 18-053-0005

SPRING HILL SUB. PH. 1
CORP OF THE PRESIDING BISHOP OF THE CHURCH OF JESUS CHRIST OF L.D.S.
170380009
3.00 AC±

DANIEL C MORGAN
170380005
40,939 SQ FT

ELBERTA DRIVE
SWENSEN PROPERTIES AMENDED
SEE P. 390

170380025
JAMES W SHUPE & GAYLA C SHUPE

SCOTT M LITTLEFIELD & WIFE TONYA E
170380014

AMANDA WENDLER MICHELLE WENDLER
170380013

250 EAST ST. SUBD.
PAGE 46

2950 NO. EAST STREET

SEE PAGE 45